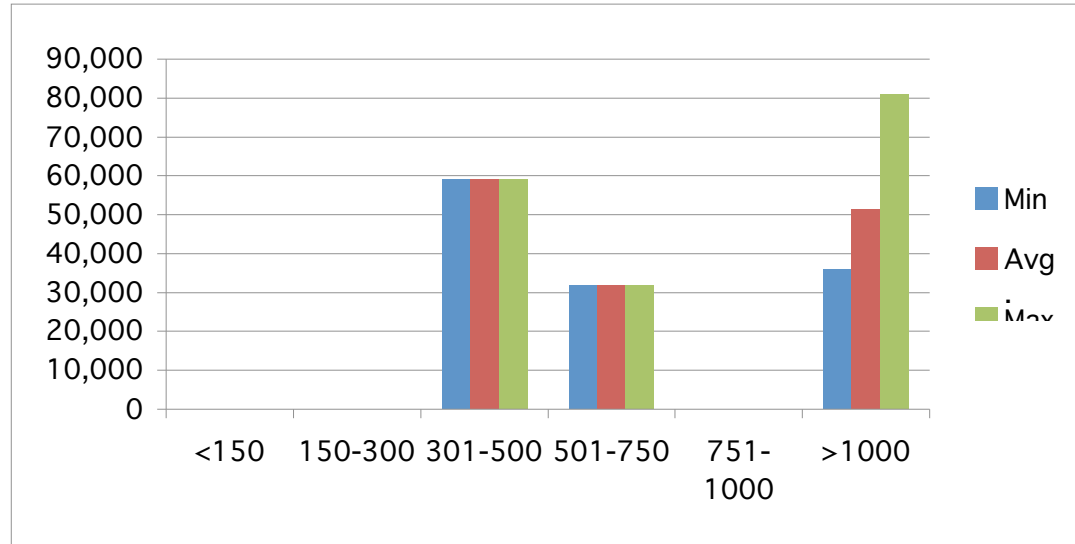


Facilities Manager

	Min	Avg.	Max
<150			
150-300			
301-500	59,000	59,000	59,000
501-750	32,000	32,000	32,000
751-1000			
>1000	36,000	51,333	81,000



Which best describes your position?	Primary Support Position:	Employment Status:	Age:	Gender:	Marital Status:	Total Years in Current Position:	Highest Education Level:	Other; Please Specify	Total Base Salary of 2007:
Support Staff	Facilities Manager	Full Time, 40+ hrs/week	41-45	Male	Married	18	High School Diploma		40,000
Support Staff	Facilities Manager	Full Time, 40+ hrs/week	36-40	Male	Married	5	High School Diploma		25,000
Support Staff	Facilities Manager	Full Time, 40+ hrs/week	61-65	Male	Married	4	Bachelor's Degree		71,000
Support Staff	Facilities Manager	Full Time, 40+ hrs/week	36-40	Male	Married	1	Some College, but no c		32,000
Support Staff	Facilities Manager	Full Time, 40+ hrs/week	51-55	Male	Married	4	Some College, but no c		47,000
Support Staff	Facilities Manager	Full Time, 40+ hrs/week	Above 65	Male	Married	5	High School Diploma		56,000
Support Staff	Facilities Manager	Full Time, 40+ hrs/week	56-60	Male	Married	5	Master's Degree		55,000
Support Staff	Facilities Manager	Full Time, 40+ hrs/week	31-35	Male	Married	8	Some College, but no c		32,000

Support Staff	Facilities Manager	Part-Time, 10-19 hrs/wk	46-50	Male	Married	30	Master's Degree	87,000
Support Staff	Facilities Manager	Part-Time, 30-39 hrs/wk	61-65	Male	Married	5	Other, Plea Doctorate	38,000

Total Compensation	Church Demographics	Average Weekly Contribution:	State:
50,000	1001 and up	34,000	TX
38,000	1001 and up	34,000	TX
81,000	1001 and up	More than 50,000	TX
36,000	1001 and up	More than 50,000	TX
47,000	1001 and up	43,000	TX
56,000	1001 and up	43,000	TX
59,000	301-500	23,000	TX
32,000	501-750	14,000	OK

14,000	501-750	27,000	TX
38,000	301-500	11,000	MO