



Centennial Initiatives

Part one in a series of four



ENSURING ACCESS
TO A GREAT HERITAGE

MAINTAINING AND BUILDING
ACADEMIC FACILITIES
THAT ENHANCE AND
INSPIRE LEARNING



One hundred years. The implications of building a university to last a century can be daunting.

Abilene Christian has persevered and excelled because of God's grace and the determined efforts of its loyal alumni and donors to help build an institution where faith and learning thrive.

The Centennial Campaign, *Called to Faith and Excellence*, is an ideal opportunity to reflect on what has made us strong, and what challenges beckon in our future.



► *Ensuring access to a great heritage*



"I invest in ACU because numerous people made sacrifices to make it possible for me to have an ACU to attend. I want to do the same for today's students and future students."

– Linda (Core '70) Cornutt

"I invest in ACU because they first invested in me. I give my loyalty to the one who believed in me and cared for me. Thank you for giving me a chance."

– Skye Noe ('04)

"Not only did someone assist me here, but I want to be a part of doing the same for others. ACU changed my life forever and gave me opportunities I never would have had otherwise."

– Joan (Wood '59) Ferrell

Ensuring access to a college education is a challenge for private universities across the nation. Nationwide, 76 percent of full-time, full-year undergrads at private institutions receive grant aid from institutional, federal, state or private sources. In addition, 16 percent of students at private colleges and universities are from families that earn \$25,000 or less.

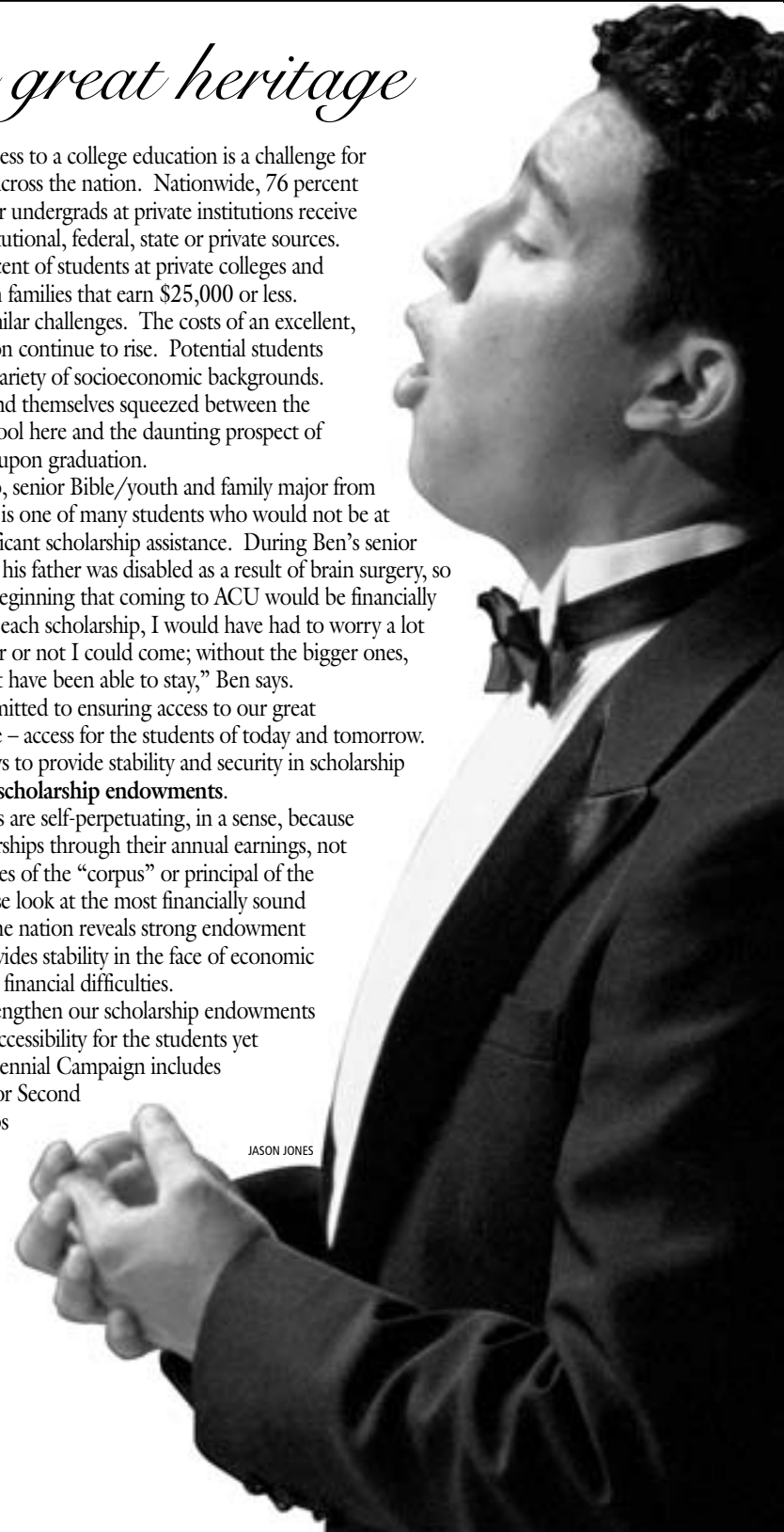
ACU has similar challenges. The costs of an excellent, faith-based education continue to rise. Potential students come from a wide variety of socioeconomic backgrounds. Our students can find themselves squeezed between the desire to attend school here and the daunting prospect of huge student loans upon graduation.

Ben Lazcano, senior Bible/youth and family major from The Colony, Texas, is one of many students who would not be at ACU without significant scholarship assistance. During Ben's senior year in high school, his father was disabled as a result of brain surgery, so he knew from the beginning that coming to ACU would be financially difficult. "Without each scholarship, I would have had to worry a lot more about whether or not I could come; without the bigger ones, I probably wouldn't have been able to stay," Ben says.

We are committed to ensuring access to our great educational heritage – access for the students of today and tomorrow. One of the best ways to provide stability and security in scholarship funding is through **scholarship endowments**.

Endowments are self-perpetuating, in a sense, because they provide scholarships through their annual earnings, not through expenditures of the "corpus" or principal of the endowment. A close look at the most financially sound universities across the nation reveals strong endowment funding, which provides stability in the face of economic downturns or other financial difficulties.

We must strengthen our scholarship endowments in order to ensure accessibility for the students yet to come. The Centennial Campaign includes endowment goals for Second Century scholarships (unrestricted merit- and need-based scholarships), Bible scholarships, and athletics scholarships.



“Renovating existing buildings is a stewardship issue. By reusing existing space and keeping it in good repair, we are being good stewards of the gifts we receive from God and from our many donors. Moving the Department of Education into its own, stand-alone space that adequately houses its many needs is a major step toward transforming the department into the School of Education.”

– Kevin Watson ('79)
Chief Administrative Services Officer



Burford Music Hall

► *Maintaining and building academic facilities that enhance and inspire learning*

To the average student or visitor, Abilene Christian's campus facilities are a backdrop to the people and events at the heart of ACU. Facilities don't usually get star billing. But they can make or break our students' experiences here. We focus on using facilities as tools to enhance and inspire learning.

Initially that means **maintaining and constantly upgrading the facilities** we already have. **Technology infrastructure** requires ongoing work to remain current. Classrooms enjoyed on-campus for decades require change to adapt them to current instructional methods. And heavy use by thousands of students each year means paint, carpet, furniture, computers and asphalt that must be repaired and replaced periodically.

None of these items is glamorous. But failure to maintain these items will eventually begin to affect the quality of instruction we offer and the quality of student we attract.

In addition, the Centennial Campaign seeks to address two major building objectives for departments that are struggling with less-than-adequate facilities. The primary project at this time is a **complete renovation of the now-vacant Burford Music Center for use as the new home of the Department of Education**. ACU has made a huge impact on our world through its education graduates – the teachers, administrators and other education specialists who have literally touched millions of students through the years.

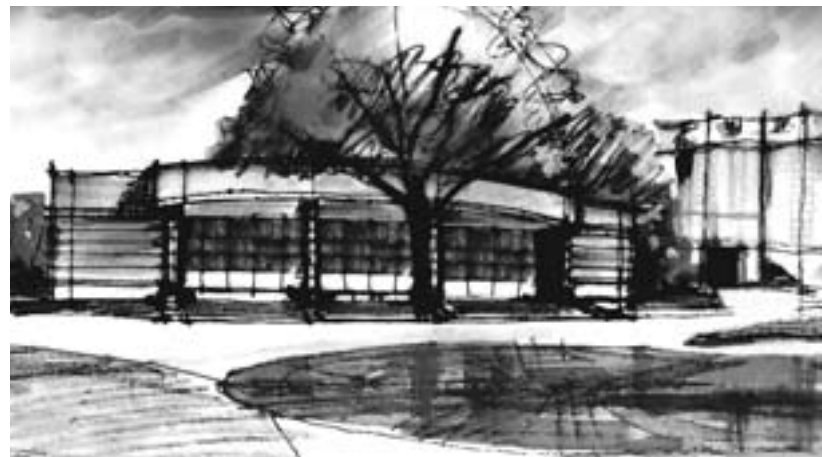
The Department of Education is now scattered through multiple buildings, continuing to produce excellent teachers in spite of cramped and inadequate facilities. The newly renovated education building would house all the education offices and educational spaces under one roof.

To date, slightly more than \$700,000 has been committed toward this \$2.5 million project. Many naming opportunities are still available for those wishing to honor their own teachers, mentors and friends.

The second major building objective is a **new Academic Building** that would house the departments of sociology and social work, psychology, and political science. The educational process in these departments is enhanced by special spaces pertinent to their work – spaces easily accessed by the public for the client services they provide, rooms for group meetings and team activities, and accessible storage for professional materials.

Completion of these building objectives, coupled with a comprehensive program of campus maintenance, will ensure that our facilities are more than adequate into our second century of educating students for Christian service and leadership throughout the world.

Proposed renovation of Burford Music Hall for Department of Education.



JASON JONES



Next issue:

Two more of the eight Centennial Campaign funding initiatives